

# Axsys Solutions

[www.axsysolutions.com](http://www.axsysolutions.com)

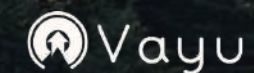
Our other ventures

 **MINIMO**  
EXTERIOR WINDOWS

**ALLIANCE**  
ALUMINUM SYSTEMS



**AARNA**  
INTERIOR SYSTEMS



**Vayu**  
WINDOW VENTILATION SYSTEM



# Company Profile

Art N Glass Group is an industry titan, comprising three market leaders. Axsys Solutions pioneers Aluminum Façade and Fenestration Design. Art-N-Glass excels in diverse glass products with ISO certifications. Green Fenestration leads in high-tech uPVC doors and windows. As India's largest integrated facility, we redefine excellence. Skilled technicians and innovative design at Art-N-Glass ensure unmatched quality. Green Fenestration's state-of-the-art setup, equipped with German and Italian machinery, coupled with a globally experienced technical team, guarantees high-tech excellence. Each entity holds a dominant market position, reinforcing the group's overall leadership. With cutting-edge technology, integrated facilities, and certifications, Art N Glass Group envisions surpassing expectations and shaping industry futures.



# Our Strengths

- ▶ 40+ years of industry experience
- ▶ 2100 trained professionals
- ▶ Production facility spanning over 5.5 lakh sq. ft.
- ▶ Projects delivered in 18+ countries
- ▶ Pioneers in the glass and aluminium industry
- ▶ One-stop comprehensive solutions
- ▶ New unit spread in 30 acres under construction
- ▶ Leaders in more than 12 verticals of the glass and

Aluminium industry



VENDÔME MALL  
QATAR, MIDDLE EAST



# Plant and Machinery

## 1. Elumatec SBZ 140 CNC Profile Machining Centre: 🇩🇪

- ▶▶ 4 Axis with a 9.7m working bed for dual working zones, enhancing production efficiency.
- ▶▶ Single-machine capabilities for milling, drilling, and routing operations



## 2. Double Head Cutting Machine: 🇩🇪

- ▶▶ 5 Axis with a 6m working bed for dual working zones, enhancing production efficiency.
- ▶▶ Single-machine capabilities for milling, drilling, and routing operations.



## 3. Corner Crimping Machine: 🇩🇪

- ▶▶ High-force profile press, up to 68 mm height, easy operation, adjustable, safety features, includes support arms and pressing blades.



# Plant and Machinery

## 4. Elumatec Nothing Saw :

- Precision notching saw for large aluminum cutting range in construction applications. Versatile, accurate, with efficient clamping and hydro-pneumatic feed.



## 5. Elumatec Automatic Saw :

- Efficient aluminum profile cutter for window manufacturing, with adjustable feed and automatic shutdown.



## 6. Vertical Panel Saw :

- CE-compliant, 4200x2200mm cut, 1950mm height, 50mm thickness, 4kW.



## 7. Elumatec End Milling Machine :

- For End Milling of Transom & Door Frames



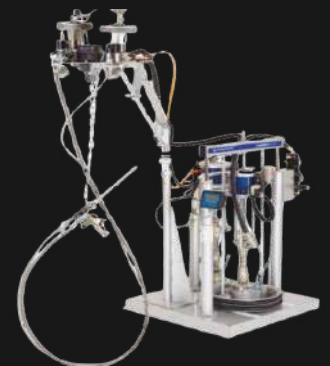
## 8. Elumatec Copy Router :

- For Key Holes & Drain Slots



## 9. GRACO Silicone 2 Part Pump :

- Precision two-component dispensing for seals, adhesives, affordable advanced technology.





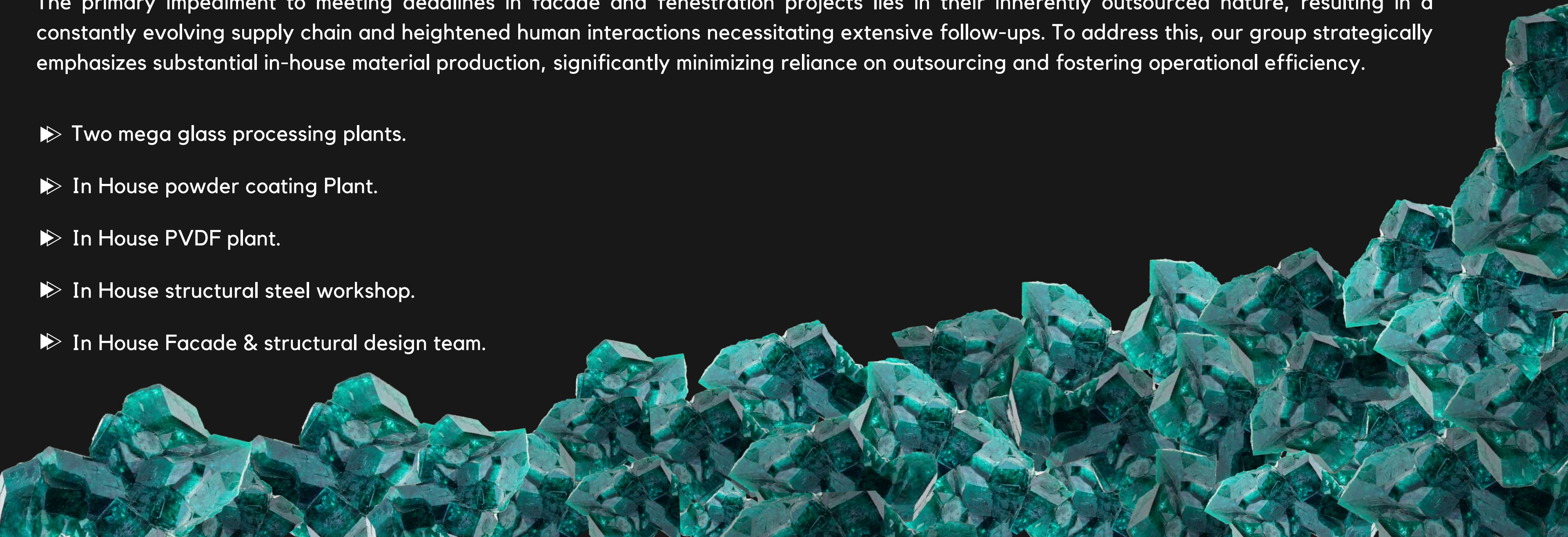
# LOW DEPENDENCY

## SELF SUSTAINING ENVIRONMENT

---

The primary impediment to meeting deadlines in facade and fenestration projects lies in their inherently outsourced nature, resulting in a constantly evolving supply chain and heightened human interactions necessitating extensive follow-ups. To address this, our group strategically emphasizes substantial in-house material production, significantly minimizing reliance on outsourcing and fostering operational efficiency.

- ▶▶ Two mega glass processing plants.
- ▶▶ In House powder coating Plant.
- ▶▶ In House PVDF plant.
- ▶▶ In House structural steel workshop.
- ▶▶ In House Facade & structural design team.





THINK IT.  
CHOOSE IT.  
GET IT.

# In House Coating

Graphite  
black  
RAL 9011

Pure  
white  
RAL 9010

Dahlia  
Yellow  
RAL 1033

Fir  
Green  
RAL 6009

Pastel  
Violet  
RAL 4009

6 Steps Pre treatment fully automated powder coating and PVDF plant .

- Conveyorized plant, auto spray booths, 200-220°C baking ensures quality coating.
- Plant is equipped with two labs i.e Dry and Wet Lab having latest Quality instruments like DFT gauge, TTR, Bend test, Impact test, Cross cut test, Etching weight loss weight balance, Boiling water test.
- Pre-powder coating, mill finish articles undergo a 6-tank pretreatment and oven drying. The line is associated with a Wet Lab equipped for titration, ensuring chemical concentration for effective degreasing and bonding, enhancing final product durability.

Certification By :





# Company Vision

Empowered by India's premier glass processing units, an in-house powder coating plant, and a cutting-edge PVDF facility, our company stands at the pinnacle of innovation and excellence. With an unwavering commitment to quality, we boast an in-house team of skilled engineers proficient in precise structural calculations, coupled with a state-of-the-art structural steel shop. Our vision is to redefine industry standards, seamlessly integrating advanced technology, top-tier craftsmanship, and unparalleled expertise. Through relentless pursuit of perfection, we aim to be the undisputed leaders, delivering bespoke solutions that not only meet but exceed expectations. At the heart of our vision is a commitment to shaping the future of glass and facade solutions, setting benchmarks that inspire and elevate the industry landscape. We don't just craft structures; we engineer experiences that leave an indelible mark on the architectural canvas.

**Innovation Catalysts**  
Designing New World class products.

**Precision Engineering**  
Meticulous attention to detail and precision is the core of our DNA

**Self-Reliance and Excellence**  
This ethos ensures not just efficiency but a commitment to excellence.



# THE MILESTONES





# Our Services

- ▶▶ **Facade Expertise:**  
Specialize in unitized and semi-unitized systems, delivering innovative solutions blending functionality seamlessly.
- ▶▶ **Versatile Door and Window Systems:**  
Provide diverse systems catering to a range of applications, meeting varied client needs.
- ▶▶ **Railing Mastery:**  
Reflect precision engineering in safety and aesthetics, offering a balance of form and function.
- ▶▶ **Skylights for Illumination:**  
Design skylights enhancing interiors with a perfect balance of aesthetics and functionality.
- ▶▶ **Partitioning Excellence:**  
Redefine spatial dynamics with flexible, aesthetically pleasing solutions for diverse interior design needs.
- ▶▶ **Pergolas for Outdoor Elegance:**  
Craft elegant outdoor spaces with meticulous design and robust construction.
- ▶▶ **Cladding Expertise:**  
Specialize in Aluminium sheet and ACP claddings, transforming structures with a harmonious blend of metal and glass.
- ▶▶ **End-to-End Metal and Glass Solutions:**  
Provide comprehensive solutions, ensuring a seamless, integrated approach to every project beyond individual components.



# Industry Sectors

## ►► Railway Sector:

Leading the way in the railway industry, we specialize in producing various types of locomotive windows for Indian Railways, supplying to multiple coach factories.

## ►► Automotive Excellence:

As OEMs for prominent automotive brands such as Tata, Ashok Leyland, JBM, Swaraj Mazda, we design and manufacture top-notch windows and windshields for the automotive industry.

## ►► Aluminum Solutions Provider:

As an Original Equipment Manufacturer (OEM) for numerous aluminum-based solutions providers, we supply premium aluminum shutters to major kitchen and wardrobe companies, contributing to the functional and aesthetic aspects of interior spaces.

## ►► HNI and VIP Residences:

Catering to the elite segment, we are frontrunners in crafting glass and aluminum solutions for High Net Worth Individuals (HNIs) and VIP residences, offering unparalleled sophistication and quality.

## ►► Commercial Spaces:

Our footprint extends to commercial spaces through our expertise in facades, providing end-to-end solutions that redefine the aesthetics and functionality of commercial structures.







# ELAN EPIC

GURUGRAM, HARYANA

Elan Epic in Gurugram, presented by Art N Glass, epitomizes commercial excellence. It showcases cutting-edge features like semi-unitized structural glazing, ACP cladding, SS cladding, louvers, and seamless railing. This meticulously crafted structure seamlessly merges modernity with opulence, setting a new standard for commercial architecture.

**Product**

Semi unitized st. glazing,  
ACP cladding,SS  
cladding, louvers,  
Seamless railing

**Area**

27000 sqm

**Client**

M/S Elan Ltd







# M3M LATITUDE

GURUGRAM, HARYANA

M3M Latitude in Gurugram is Gurgaon's tallest tower, triumphing over Western competition, showcasing architectural significance. Innovative door windows, tubular louvers, and a crown in Aluminum Composite Panel demonstrate technical prowess. This project aligns with the "Make in India" movement, emphasizing local manufacturing and architectural innovation.



**Product**

Doors & Windows,  
Facade, ACP, Circular  
Louvers

**Area**

12000 sqm

**Client**

M3M





# DLF KINGS COURT

GREATER KAILASH, NEW DELHI

Welcome to King's Court, the epitome of luxury living in Delhi. As proud contributors to this prestigious project, our role involved delivering high-insulated, thermally broken aluminum doors and windows, showcasing cutting-edge technology. Elegant railings, contemporary shower cubicles, and reflective mirrors crafted with meticulous precision define these super luxury homes, embodying success, refined taste, and technological prowess. King's Court reflects the superlative quality of life we bring to your doorstep.



## Product

Door/ Window, High  
Performance Double  
Glazed Unit Glasses (DGU)

## Area

12000 sqm

## Client

DLF





# UNISON CENTRIO MALL

## DEHRADUN

Unison Centrio Mall in Dehradun showcases a technical marvel with semi-unitized glazing, perforated metal facade, ACP cladding, robust MS structure, elegant shop fronts, precision-engineered railings, and strategically placed tubular louvers. This meticulous project seamlessly blends technical excellence and aesthetic appeal, defining it as an architectural masterpiece.



### Product

Semi Unitized Glazing,  
Perforated Metal Facade,  
Tubular Louvers.

### Area

2600 sqm

### Client

Unison Infratech Pvt Ltd



# AFRICAN AVENUE MINISTRY OF DEFENCE

NEW DELHI

Picasso Centre, a grandeur of architectural opulence by Art N Glass, showcases design excellence with an Canopy and Semi Unitized Glazing. High-Performance Blue Reflective Glass adds modern sophistication and energy efficiency, transforming it into a masterpiece. Every detail reflects the commitment to redefine the narrative of grand commercial architecture.



## Product

door /window, Canopy,  
Partition, Semi Unitized  
Glazing

## Area

10625 sqm

## Client

Ahluwalia Contractors  
Pvt. Ltd



# KG MARG - MINISTRY OF DEFENCE

NEW DELHI

The defense office complexes, inaugurated by PM Narendra Modi, accommodate 7,000 officials. Highlighted products include curtain walls for energy-efficient aesthetics, ACP for durable exteriors, and louvers for ventilation, creating a modern, efficient workspace for defense personnel in the Ministry of Defence and the Armed Forces.



## Product

Curtain wall, ACP,  
Louvers

## Area

3900 sqm

## Client

Ahluwalia Contractors  
Pvt. Ltd





# HINDAN AIR BASE / BOEING

## GHAZIABAD

Air Force Station Hindon (Hindon AFS), the largest air base in Asia, situated near Loni Ghaziabad, features state-of-the-art infrastructure. The product highlight includes doors and windows designed to meet the stringent requirements of a military facility, ensuring security, functionality, and durability.

**Product**  
Doors and Windows

**Area**  
4000 sqm

**Client**  
Boeing







# CAPFIMS / LNT

NEW DELHI

Central Armed Police Forces Institute of Medical Sciences envisions a 51-acre campus by the Central Public Works Department, including a 500-bed General Hospital, Super-specialty Hospital, Medical and Nursing College, auditorium, residential quarters, and a student hostel. Highlights: Doors & Windows, Semi-Unitized Structural Glazing, ACP, and Tubular Fins, ensuring a harmonious blend of functionality and aesthetics.



**Product**  
Doors & Windows,  
Semi Unitized Structural  
Glazing, ACP, Tubular Fins

**Area**  
25000 sqm

**Client**  
LNT





# GULSHAN 129

NOIDA, UP

Art N Glass unveils Gulshan One 29 in Noida, a modern commercial marvel with premium Glazing and 3 Barreir open groove system, embodying timeless elegance. High-Performance Blue Reflective Glass combines aesthetics and energy efficiency, while Security Toughened Glass and Aluminium Profiles ensure safety and precision. A grand glass structure redefines the skyline with modernity.



<b>Product</b>	<b>Area</b>	<b>Client</b>
3 Barreir open groove system. Canopy, Railing, Frameless Door, Louvers	3200 sqm	Gulshan Homes and Infrastructure Pvt. Ltd.

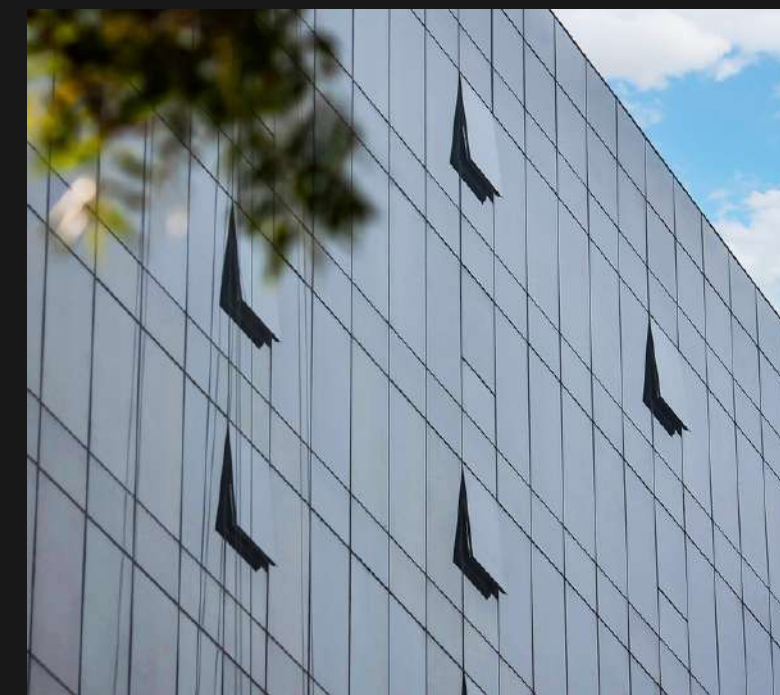




# MAX SQUARE

NOIDA, UP

Max Square in Noida, a corporate icon by Art N Glass, redefines the skyline with Technal Fully Unitised Glazing and High-Performance Reflective Glass, blending interior and exterior seamlessly. Timeless charm is added with Technal Fully Unitised Glazing, creating a visual spectacle that embodies corporate elegance and modernity, elevating the spirit of businesses.



## Product

Technal Fully Unitised  
Glazing, ACP Cladding

## Area

7550 sqm

## Client

Max Square Ltd.

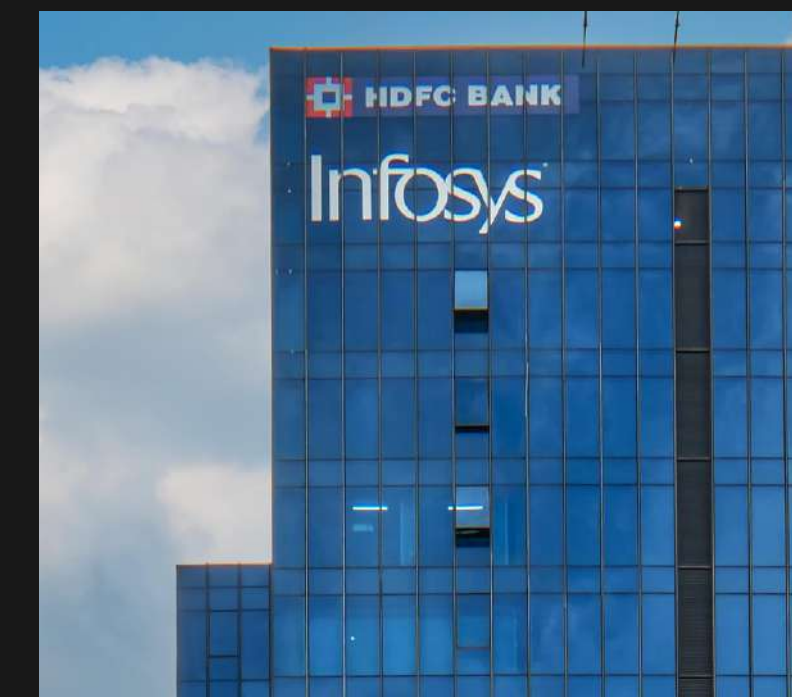




# ACE CAPITOL

NOIDA, UP

Art N Glass transforms urban architecture with Ace Capital, a high-rise commercial masterpiece featuring premium Glazing and ACP. The building boasts High Performance Blue Reflective Glass, balancing aesthetics and energy efficiency. Meticulous design and security integration redefine the skyline with modern sophistication and safety.



## Product

Unitised glazing , door  
window , ACP

## Area

19500 sqm

## Client

Ace Mega Infrastructures  
Pvt. Ltd





# SKYMARK

NOIDA, UP

Skymark One Mall in Noida, unveiled by Art N Glass, is a retail marvel with an Perforated sheet / ACP, Digital Printed Glass, and High-Performance Reflective Glass. Precision-crafted, it transforms into an architectural masterpiece, redefining the retail experience with sophistication and modernity. Art N Glass continues to elevate retail architecture narratives.

## Product

Perforated sheet / ACP

## Area

2500 sqm

## Client

Sky Mark Pvt Ltd







# CLEO COUNTY CLUB

## NOIDA

Cleo County offers luxurious flats in Noida, featuring modern amenities for a comfortable lifestyle. The highlighted Semi-Unitized Structural Glazing adds a contemporary touch, enhancing both the appeal and functionality of the living spaces, ensuring a privileged and stylish residential experience.



**Product**  
Semi Unitized Structural  
Glazing

**Area**  
3500 sqm

**Client**  
County Group





# BHUTANI ALPHATHUM

NOIDA

Bhutani Alphathum, a rapidly progressing commercial project, features a unique concept with a rooftop swimming pool across three towers. Spanning 20 lakh square feet, it comprises three skyscraper towers connected by an infinity pool. Sustainable architectural design includes semi-unitized structural glazing for eco-friendly and efficient workspaces.



## Product

Semi Unitized Structural  
Glazing

## Area

9000 sqm

## Client

Bhutani Group





# UNITY AMARYLLIS

## KAROL BAGH

Unity The Amaryllis, a 40-acre luxury residential project on New Rohtak Road in Karol Bagh, Delhi, features 17 iconic towers with urban homes and premium amenities. Highlights include Tubular Louver, ACP, Semi-Unitized Glazing, and Aarna Interior Partitions, enhancing both exterior aesthetics and interior spaces for a modern lifestyle.

### Product

Tubular louver, ACP, Semi unitized Glazing, Aarna interior Partitions

### Area

20000 sqm

### Client

Unity







# AIPL JOY STREET

GURUGRAM, HARYANA

AIPL JoyStreet in Gurugram showcases a comprehensive approach, featuring stunning arched aluminum windows, structural glazing, and shop fronts. The project, guided by visionary architects DFI, exemplifies collaborative efforts, combining aesthetic vision with skilled execution for a visually appealing and functional space.

**Product**

Curtain wall , ACP ,  
Railing , Doors & Windows

**Area**

2500 sqm

**Client**

Advance India Private Ltd







# IREO ASCOTT

## GURGAON

Ireo Ascott in Ireo City, Gurgaon, epitomizes luxury with lavish serviced apartments. Spanning 700 acres, it combines residential and commercial spaces, including the upscale Ireo City Central. The highlighted products, Doors & Windows and Semi-Unitized Structural Glazing, ensure a seamless blend of aesthetics and functionality, enhancing the overall ambiance.

### Product

Doors & Windows,  
Semi Unitized Structural  
Glazing.

### Area

3500 Sqm

### Client

Ireo







# RAHEJA REVANTA

## GURGAON

Revanta, towering at approximately 199 meters in Gurugram, draws inspiration from Marina Bay Sands, Singapore. It features one of India's tallest Skybridge, a clubhouse, and a 46th-floor infinity pool. The product highlight includes sophisticated Semi-Unitized Structural Glazing, ensuring a modern and elegant architectural design.

### Product

Semi Unitized Structural Glazing.

### Area

9000 sqm

### Client

Raheja







# BIKANERWALA

GURUGRAM, HARYANA

Art N Glass transforms Bikanerwala in Gurugram into a sensory experience, merging design, innovation, and culinary excellence. The mesmerizing facade, adorned with Structure Glazing and Digital Printed Glass depicting a lush jungle, reflects a commitment to creativity.

## Product

St. Glazing, Digital Printed Glass

## Area

600 sqm

## Client

Bikanerwala







# PICASSO CENTRE

GURUGRAM, HARYANA

Picasso Centre, a grandeur of architectural opulence by Art N Glass, showcases design excellence with an Curtain wall, ACP and Railing,. High-Performance Blue Reflective Glass adds modern sophistication and energy efficiency, transforming it into a masterpiece. Every detail reflects the commitment to redefine the narrative of grand commercial architecture.



**Product**

Curtain wall, ACP,  
Railing, Doors & windows

**Area**

4960 sqm

**Client**

Era Resort Pvt. Ltd.





# SANT PERMANAND HOSPITAL

YAMUNA BAZAAR, NEW DELHI

The Permanand Hospital facade showcases modern architecture with a focus on aesthetics and function. Featuring the Alliance F50SG, structural glazing, high-performance glass, and Artrail R46 railing with security Sentry glass, the design blends style with energy efficiency, sustainability, and safety. A testament to holistic and cutting-edge healthcare architecture.

## Product

Structural Glazing, ACP

## Area

3800 sqm

## Client

Sant Permanand Hospital







# AMBA SHAKTI

SOUTH EX, NEW DELHI

The Amba Shakti project in South Ex, New Delhi, harmoniously blends modern design with functionality, featuring key products for aesthetic appeal and practicality. Alliance F50 Structural Glazing offers a sleek appearance and structural integrity, Tubular Fins add architectural flair with shading benefits, and Aarna Office Partitions contribute to stylish, functional interior spaces. This project exemplifies a seamless fusion of exterior and interior elements, creating a contemporary and functional space in vibrant New Delhi.



## Product

Aarna office Partitions,  
Alliance F50 Stuctural  
Glazing, Tubular Fins.

## Area

1200 sqm

## Client

Amba shakti





# M3M URBANA

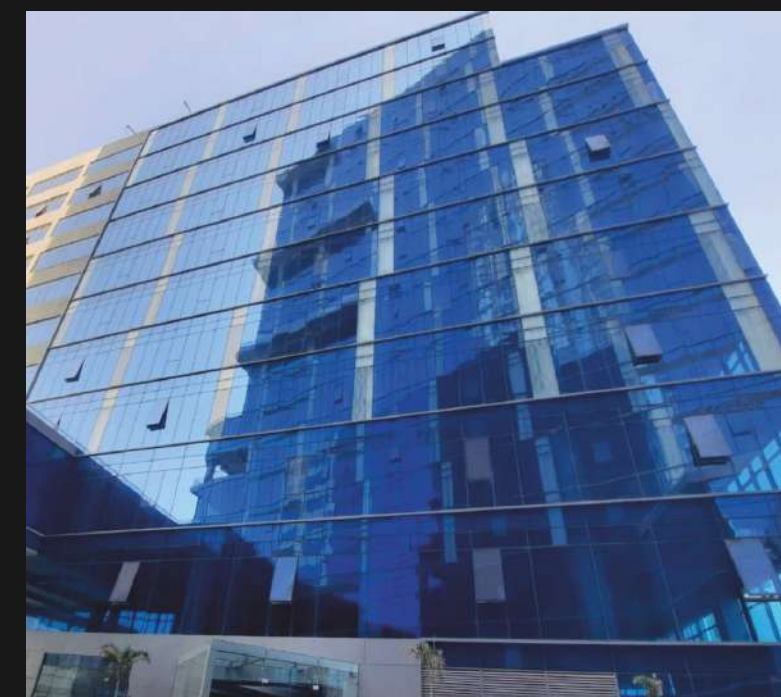
## GURUGRAM

M3M Urbana Business Park - Block A, located in sector 67, Golf Course Extension Road, Gurgaon, is an IT/ITES building with convenient access from Sohna-Badshapur Road., it offers spacious and well-designed commercial office spaces with modern amenities. The unitized glazing enhances its aesthetic appeal and functionality, ensuring a comfortable and efficient working environment.

**Product**  
Unitised Glazing

**Area**  
4000 sqm

**Client**  
M3M India Pvt. Ltd







# AIPL JOY CENTRAL

GURUGRAM, HARYANA

AIPL Joy Central Mall in Gurugram, a testament to Art N Glass's design excellence, features Digital Printed Green Onyx Stone Finish Glass Panelling on Studs. This grandeur redefines the shopping experience, showcasing innovation and aesthetic brilliance in commercial architecture.



## Product

Digital printed Green  
Onyx pattern

## Area

500 sqm

## Client

AIPL





# AIPL BUSINESS PARK

GURGAON

AIPL Business Club in Gurugram, designed by Morphogenesis, stands as a pinnacle of contemporary office architecture. The product highlight, sophisticated spider glazing, not only contributes to the building's architectural finesse but also reflects a commitment to elegance and precision, enhancing the overall professional ambiance.

**Product**  
Spider Glazing

**Area**  
2000 sqm

**Client**  
AIPL







# AIPL DC NEXT

## AMRITSAR

AIPL DreamCity in the heart of Amritsar offers a range of homes, including villas, independent floors, and plots. Modern amenities, strategic location, and a gated complex ensure an upscale living experience. Product highlights include Aluminium Perforated Sheet and Semi-Unitized Structural Glazing, adding to the project's aesthetic and functional appeal.



### Product

Aluminium Perforated Sheet, Semi Unitized Structural Glazing.

### Area

2000 sqm

### Client

AIPL





# AIPL PEACEFUL HOMES

GURGAON

AIPL The Peaceful Homes, a sprawling 11.7-acre low-density group housing complex, impresses with furnished, air-conditioned double-height entrance lobbies in each tower. This design enhances the grand and welcoming atmosphere. Key product highlights include premium quality doors and windows, adding to the project's overall allure.



**Product**  
Doors & Windows

**Area**  
500 sqm

**Client**  
AIPL





# AIPL - 42 OKHLA

NEW DELHI

AIPL Legacy in Okhla Phase III showcases a distinctive identity with innovative design, integrating cutting-edge architecture, sustainability, technology, and engineering. The product highlights include Curtain Wall for enhanced aesthetics and functionality, along with Semi-Unitized Structural Glazing for modern efficiency and design appeal.



## Product

Curtain wall,  
Semi Unitized Structural  
Glazing.

## Area

3500 sqm

## Client

AIPL





# ACE DIVINO

GREATER NOIDA, UTTAR PRADESH

Ace Divino, Greater Noida, stands as a residential masterpiece, blending opulence and design excellence. From Fix Windows with Frosted Glass to the F-32 Facade with Cover Plate and Security Glass, every detail contributes to a luxurious living experience. Glass Partitions and Pivot Doors add modern sophistication to the interiors, making Ace Divino a symbol of contemporary sanctuaries.



**Product**

Door & window,F-32  
Facade, Internal Aarna

**Area**

10000 sqm

**Client**

ACE





# ELDECO MYSTIC

## NOIDA

Eldeco Mystic Greens, spanning 9 acres in Greater Noida, offers spacious housing with essential amenities. Budget-friendly and lifestyle-appropriate, the project's product highlights include quality doors and windows, ensuring a harmonious blend of functionality and style.

**Product**  
Doors & Windows

**Area**  
1100 sqm

**Client**  
Ms. Eldeco







# ELDECO ACCOLADE

## GURGAON

Eldeco Accolade in Sohna features 8 towers, each with 18 floors, totaling 809 units. Spanning 13 acres, it offers spacious living with essential amenities. The project's product highlights include quality doors and windows, ensuring a perfect balance of functionality and style.

**Product**  
Doors & Windows

**Area**  
5000 sqm

**Client**  
Ms. Eldeco







# HOLIDAY INN

## GURUGRAM SECTOR 90

The product highlights at Holiday Inn Gurugram Sector 90 encompass Doors & Windows, ensuring a seamless blend of aesthetics and functionality. The Semi-Unitized Structural Glazing further enhances the hotel's visual appeal, creating a contemporary and inviting atmosphere for guests.



### Product

Doors & Windows,  
Semi Unitized Structural  
Glazing.

### Area

3500 Sqm

### Client

Sethia Group





# REDFOX HOTEL

DEHRADUN, UTTARAKHAND

The Red Fox Hotel in Dehradun, Uttarakhand, distinguishes itself as a luxury and sustainable destination, featuring innovative windows that connect guests with nature. With a focus on aesthetics, insulation, security, and waterproofing, the hotel offers a unique experience, blending comfort, security, and a close connection to the scenic surroundings.

## Product

Upvc , Door/Window

## Area

600 sqm

## Client

Mr Ravi







# TAJ THEOG

SHIMLA, HIMACHAL PRADESH

Embark on a journey through the pristine mountains of Devbhumi, Himachal Pradesh, to discover our luxurious hotel in Theog, Shimla. Inspired by local craftsmanship, our pivotal role included Alliance windows for the facade and intricate glasswork within. Meticulously crafted details enhance the hotel's ambiance, showcasing our commitment to excellence.

## Product

Doors &Windows

## Area

2000 sqm

## Client

Mahamaya







# JANPATH HOTEL

## NEW DELHI

In the heart of New Delhi, The Janpath Hotel is a modern mid-rise with comfortable, internationally styled rooms adorned with local touches. Notable features include SMU glazing, innovative door/window designs, and elegant backlit mirrors, ensuring a contemporary and culturally rich experience for guests.



### Product

Semi unitized glazing,  
Door/window,  
Backlit mirror

### Area

990 sqm

### Client

Dee Vee Projects Ltd



# COURTYARD BY MARRIOTT

## GURUGRAM

Courtyard by Marriott Gurugram Downtown, centrally located in Gurugram, provides easy access to major IT hubs. The property features St. Glazing for enhanced aesthetics and UPVC & Aluminum Doors/Windows for durability, energy efficiency, and a modern look, ensuring a comfortable and visually appealing environment for guests.



### Product

St. glazing , UPVC & Alum  
door /windows

### Area

2000 sqm

### Client

Jindal Habitat Solutions  
Pvt. Ltd.





# IRIS CLUB

CHANDIGARH, PUNJAB

Art N Glass proudly unveils Iris Club, an architectural masterpiece where the Semi unitized Facade, adorned with a pressure plate and security glass, creates durability and safety. Graceful arch windows evoke classical elegance, seamlessly blending tradition with modernity. Iris Club, with its colonial architecture, grand round shape, and colossal columns, stands as a symbol of Art N Glass's dedication to transcending the ordinary and creating spaces of architectural brilliance.

## Product

Semi unitized Facade,  
Security glass

## Area

500 sqm

## Client

Ambika Realcon







# GALLERIA MALL

MAYUR VIHAR, NEW DELHI

Galleria Mall in New Delhi stands out with a distinctive design, featuring a glazing facade divided symmetrically with mullions and transom, high-performance glass, and Aluminum Composite Panels. Prioritizing aesthetics and energy efficiency, these elements contribute to a visually appealing, modern, and inviting shopping space.

Product	Area	Client
Bespoke Decorative Glass, ACP (Aluminium Composite Panel)	1400 sqm	Advance India Pvt. Ltd







# CHANDIGARH CITY CENTRE

ZIRAKPUR, PUNJAB

Chandigarh Citi Centre, located on a sprawling 10-acre site in Zirakpur, appears to be a meticulously designed project, offering a grand experience. The use of products like Railing R-46, UPVC windows, and unique arched windows adds classical charm, aesthetics, and a welcoming ambiance. The thoughtful craftsmanship creates an appealing and functional space for shoppers and the public alike.

## Product

Railing R-46, UPVC windows, Unique arched windows

## Area

2000 sqm

## Client

Mr. Pankaj Gupta







# PARAS IRENE

Sector 70, Gurgaon

Paras Buildtech, a key arm of the esteemed Paras Group, pioneers real estate innovation with F 50—a flagship project blending design and functionality to set new architectural benchmarks. Emphasizing Door/Window Facade for aesthetic sophistication and Unitized Glazing for efficiency, Paras Buildtech redefines luxury living and commercial spaces in India's dynamic real estate realm, guided by trust and integrity.

**Product**  
F 50, Door/Window  
Facade, Unitized Glazing

**Area**  
500 sqm

**Client**  
Paras Group







# JANG - E - AZADI

KARTARPUR, PUNJAB

Jang-e-Azadi Memorial and Museum in Kartarpur, Punjab, designed by architect Raj Rewal, stands as a prominent destination. The 25-acre complex commemorates the sacrifices of the Punjabi community in India's independence struggle, with bespoke Skylight & Glazing adding architectural significance to this state-of-the-art memorial.

## Product

Bespoke Skylight & Glazing

## Area

2500 sqm

## Client

Mr. Deepak Builder





# DLF CAPITAL GREENS

## NEW DELHI

DLF Capital Greens in Moti Nagar, New Delhi, offers exclusive and luxurious living in a lush green setting. Designed by reputed architects, the project features elegant 2, 3, and 4 BHK apartments in a 33-acre gated community. The product highlights include doors and windows, likely emphasizing the use of high-quality and stylish fittings for a modern and sophisticated living experience.



### Product

Doors & Windows

### Area

15000 sqm

### Client

DLF





# DLF VALLEY

## PANCHKULA

Spread across 84 hectares, The Valley is a meticulously planned township nestled in the Shivalik Range foothills, hosting 1100 happy families. The product features include state-of-the-art doors and windows, ensuring a seamless blend of aesthetics and functionality, contributing to the community's natural living and leisure.

**Product**  
Doors & Windows

**Area**  
15000 sqm

**Client**  
DLF







# IBM TOWER

NOIDA

Wegmans Trustone City in Noida Extension offers IT and SEZ spaces in a LEED certified green building. Highlighted products include quality Doors & Windows, ensuring security and aesthetics, and Semi-Unitized Structural Glazing, combining modern design with functionality, creating an ideal environment for IT and software industries.

## Product

Doors & Windows,  
Semi Unitized Structural  
Glazing.

## Area

5000 sqm

## Client

Wegmans Trustone







# JADE 90

## MOHALI

Jade Business Park redefines commercial spaces with a unique 1.5-acre Courtyard, fostering energy and harmony. Featured products include Doors & Windows for security and aesthetics, and Semi-Unitized Structural Glazing, seamlessly combining modern design and functionality to create a dynamic business community.



### Product

Doors & Windows,  
Semi Unitized Structural  
Glazing.

### Area

3500 Sqm

### Client

Sethia Group





# IREO SKYON

## GURGAON

IREO Skyon, situated in Sector 60, Gurgaon, offers a rejuvenating lifestyle. Developed by IREO, this mega township comprises 6 towers with 790 units, offering 2, 2+Study, 3 & 4-bedroom configurations. Part of the expansive IREO City spread over 500 acres, it features product highlights such as Doors & Windows and Semi-Unitized Structural Glazing, ensuring both aesthetic appeal and functionality.



### Product

Doors & Windows,  
Semi Unitized Structural  
Glazing.

### Area

18000 sqm

### Client

Ireo





# LOGIX BLOSSOM COUNTY

**NOIDA**

Logix Blossom County in Sector 137, Noida Expressway, covers 25 acres with 1600 units. Designed for a modern lifestyle, it offers ample green space. Product highlights include quality doors and windows, ensuring a blend of functionality and aesthetics in this peaceful residential environment.

**Product**  
Doors & Windows

**Area**  
10785 sqm

**Client**  
Ms. Logix







# MIRANDA HOUSE

NEW DELHI

Miranda House, part of the University of Delhi's north campus, is a heritage building designed by architect Walter Sykes George. The campus, with a historic hostel and additional buildings, boasts a colonial-style layout. The product highlights include doors and windows, preserving the architectural legacy while meeting contemporary standards.

## Product

Doors & Windows

## Area

1200 sqm

## Client

Delhi University







# LBSNAA ADMINISTRATION SPORTS COMPLEX

## MUSSOORIE

The Lal Bahadur Shastri National Academy of Administration (LBSNAA) in Mussoorie is a premier training institution for civil services in India. It conducts Foundation Courses and professional training for services like IAS. Product highlights include Semi-Unitized Glazing and door/windows, ensuring a blend of functionality and aesthetics in its infrastructure.

### Product

Semi unitised Glazing ,  
door /windows

### Area

800

### Client

Jai Prakash and Sons







# SOVERIGN IT PARK

NOIDA

Sovereign Tower, on Greater Noida highway, spans 5300 sqm with 17 floors and post-modern architecture. Air-conditioned with a cooling tower system, it boasts a LEED Platinum rating. Divided into private (office) and public zones, featuring stackable parking, rooftop garden, and gym, the tower prioritizes balance and sustainability.

## Product

Spider Glazing

## Area

1000 sqm

## Client

PGRG Group







# VENDOME MALL

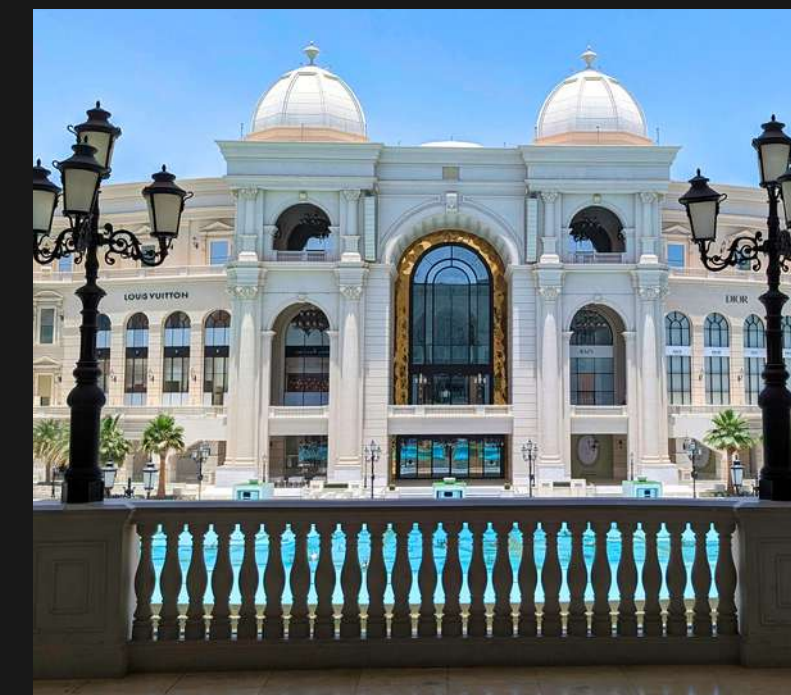
**QATAR, MIDDLE EAST**

Place Vendôme in Lusail City, a multibillion Qatari Riyal project by United Developers, is a testament to Qatar's commitment to innovation. Inspired by Rue de la Paix in Paris, it radiates luxury and cultural ambiance. Art-n-Glass, as the sole Indian vendor, played a pivotal role, supplying specially crafted decorative glasses, showcasing artistic brilliance on the global stage.

**Product**  
Bespoke Decorative Glass

**Area**  
1500 sqm

**Client**  
Alu Nasa - Qatar







# SUNRISE

NOIDA, UP

Art N Glass unveils The Commercial Centre, a modern architectural masterpiece adorned with exclusive Glazing and Semi unitized system, showcasing a blend of form and function. High-Performance Security Glass ensures safety with sophistication, and the unique curved structure adds avant-garde elegance, making it an iconic landmark.



## Product

Semi - Unitized Glazing

## Area

350 sqm

## Client

Sunrise Structures and  
Developers pvt. Ltd





# BDR RESIDENCE

HAUZ KHAS, NEW DELHI

Presenting a commercial marvel where innovation meets sophistication—a testament to Art N Glass's commitment to contemporary masterpieces. Aluminium Slider Windows, Railing with SS Handrail, and F-32 Facade with Pressure Plates merge modern functionality with sleek design. Black Powder Coated Finish on windows adds a modern flair, redefining architectural excellence.



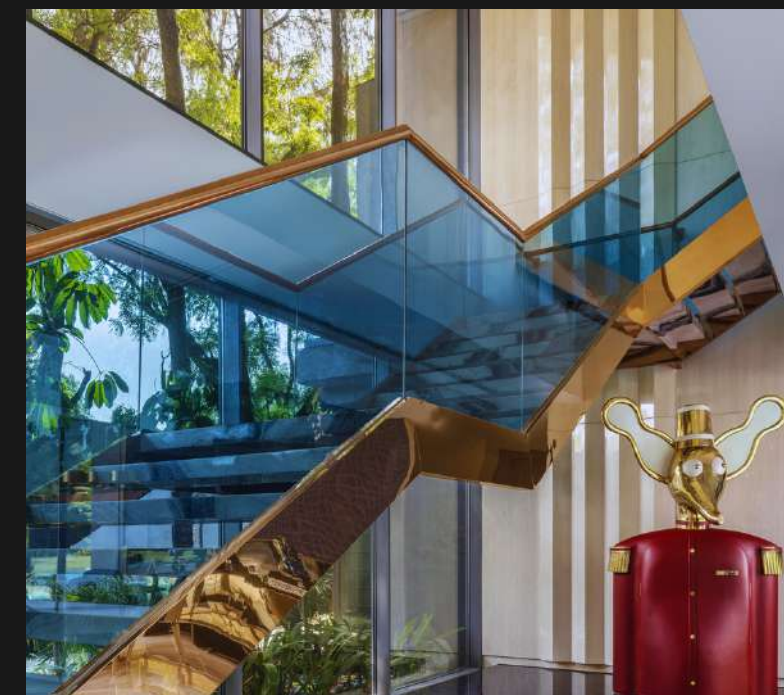




# MANKIND FARM

CHATTARPUR, NEW DELHI

VT Farm in Chattarpur, New Delhi, is a meticulously designed project by architect Ar. Sanjyt Singh. A combination of architectural and interior design marvel, it utilizes Minimo, Artrail, and Aarna products, including external sliders, facades, railings, internal sliders, and shower cubicles. A celebration of creativity and innovation.







# BRAR'S RESIDENCE

MOHALI, PUNJAB

The Brar's Residence in Mohali, Punjab, is a meticulously designed and crafted palatial home. Architect Gurveer's expertise, showcased through Alliance Windows with Georgian bars and DGU, contributes to its enduring appeal and energy efficiency. Art N Glass takes pride in being part of this architectural masterpiece.





# JUST DIAL RESIDENCE

MAHARANI BAGH, NEW DELHI

Maharani Bagh project in New Delhi, spanning 800 square yards, showcases simplicity and elegance. Essentia Environments' curation and Ruvi Arch Photography capture a minimalist, modern aesthetic with a slim facade, 15 ft tall minimal windows, and slim aluminum railing. Internal slim sliders enhance both aesthetics and functionality, creating a visually appealing and practical space, proving that beauty is found in purposeful simplicity.







# AKG RESIDENCE

EAST OF KAILASH, NEW DELHI

Nestled in East of Kailash, New Delhi, our private residence harmonizes timeless sophistication and modern comfort. Featuring L-Shape Security Glass Windows, Alliance Slider and Partition, R-46 Railing, and a minimalist Shower Cubicle, this space is an oasis of understated design. It's more than a home; it's where aesthetics meet everyday functionality.







# MANAV RACHANA RESIDENCE

FARIDABAD, HARYANA

Nestled in Faridabad, this private residence is a masterpiece of architectural finesse. Art N Glass products, including Minimo Windows with Blinds, Easy Round D-40 Balcony Railing, and Alliance Centre Opening Sliders, contribute to the symphony of elegance. Earthy tones and sustainable design make it a haven of sophistication and clean living.







# EICHER RESIDENCE

GURUGRAM, HARYANA

Art N Glass has transformed a private residence into a masterpiece with the Alliance Exterior System. The stunning railing, adorned with reflective glass, combines safety with contemporary flair. The Unique Arch Window adds to the charm, marrying tradition with modern aesthetics. This project reflects innovation, craftsmanship, and timeless beauty.



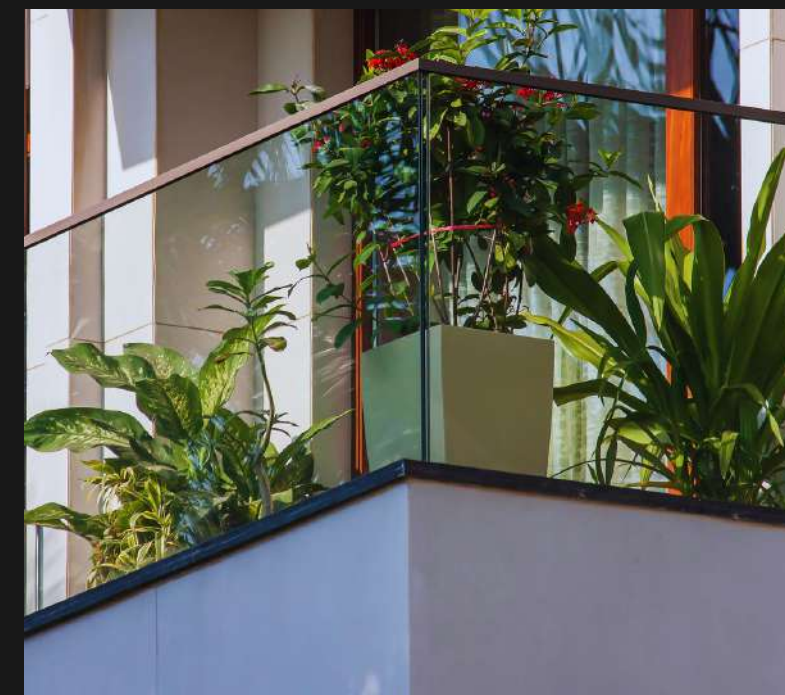




# PRIVATE RESIDENCE

KALINDI COLONY, NEW DELHI

The private residence in Kalindi Colony, New Delhi, spanning 900 square yards with 50,000 square feet coverage, is a multifaceted beauty designed by Eternity Architects. Featuring Minimo slim windows, ArtRail, and aluminum partitions, it harmoniously blends modern design, artistic elements, and functional spaces for a luxurious living experience.







# GR BROS RESIDENCE

KALINDI COLONY, NEW DELHI

Art N Glass presents a private residence celebrating chic modernity. The R-46 Railing exudes sophistication, Fix and L-Shape Windows frame views, and Minimo Sliders seamlessly connect indoor and outdoor spaces. A testament to Art N Glass's commitment to contemporary design excellence, this residence harmoniously blends aesthetics with functionality.





# Social Media



Scan to visit our  
Instagram Page



Scan to visit our  
Youtube Page







# Media and Websites

Scan this QR code to access 101 Projects.



Tel no.

011 47 630 400

Mob no.

+91 8882766655

Email id : [media@artnglassinc.com](mailto:media@artnglassinc.com)

Toll Free : 1800 102 1464

Tel no : 011 47 630 400

Mob no : +91 8882766655

Websites : [www.artnglassinc.com](http://www.artnglassinc.com)

[www.axsyssolutions.com](http://www.axsyssolutions.com)

[www.greenfenestration.com](http://www.greenfenestration.com)

[www.aarnahomes.com](http://www.aarnahomes.com)





# 3 PILLARS OF SELECTION CRITERIA

## QCD—Quality, Cost, Delivery

stands as the fundamental triad in project management, shaping the success and efficiency of any endeavor. The interplay of these three pillars determines the overall outcome and client satisfaction. It's imperative for those seeking contractors to recognize that a balanced evaluation, weighing each aspect—quality, cost-effectiveness, and timely delivery—is essential. Singularly focusing on any one element may compromise the project's overall success, leading to delays and other complications. A comprehensive assessment, where contractors are rated on their ability to maintain high-quality standards within budget and adhere to timelines, ensures a holistic and successful project execution.

A large, bold, white letter 'Q' is centered over the 'QUALITY' section. In the background, a bronze statue of a leaping figure is visible against a modern glass building.

**QUALITY**

Quality is the bedrock of every successful project, reflecting precision and excellence. It encompasses meticulous craftsmanship and attention to detail, ensuring the end product meets or exceeds expectations.

A large, bold, white letter 'C' is centered over the 'COST' section. In the background, a bronze statue of a leaping figure is visible against a modern glass building.

**COST**

Cost efficiency is paramount for project viability. A strategic balance between budgeting and resource allocation ensures optimal utilization of funds, preventing unnecessary financial strain without compromising quality.

A large, bold, white letter 'D' is centered over the 'DELIVERY' section. In the background, a bronze statue of a leaping figure is visible against a modern glass building.

**DELIVERY**

Timely delivery is the linchpin of project success. Meeting deadlines reflects efficiency and reliability. Punctual completion ensures client satisfaction, preventing cascading issues and maintaining project momentum.



# Why most facade & Fenestration Project Overshoots the fiscal Budget or Timeline ?

- Reason 1 - The primary impediment to meeting deadlines in facade and fenestration projects lies in their inherently outsourced nature, resulting in a constantly evolving supply chain and heightened human interactions necessitating extensive follow-ups.
- Reason 2 - Inadequate machinery to handle new and complex facade designs
- Reason 3 - Technical Capability and capacity of the leader and its subsequent team.
- Reason 4 - Unforeseen Expenses and poor Liquidity Management
- Reason 5 - Insufficient manpower and execution related machinery.



# Contact us for More

Questions? Comments? Concerns?

Contact us to discuss anything you'd like, or simply drop a line to say hi. We love (virtual) coffees and always welcome the opportunity.

Toll Free no.  
1800 102 1464

Tel no.  
011 47 630 400

Mob no.  
+91 8882766655

Email  
[estimation@axsysolutions.com](mailto:estimation@axsysolutions.com)  
[satwikpathak@axsysolutions.com](mailto:satwikpathak@axsysolutions.com)  
[falgunidas@artnglassinc.com](mailto:falgunidas@artnglassinc.com)

website  
[www.axsysolutions.com](http://www.axsysolutions.com)  
[www.artnglassinc.com](http://www.artnglassinc.com)  
[www.greenfenestration.com](http://www.greenfenestration.com)