

## **DELHI**

1/118, W.H.S., Kirti Nagar,  
Near Fire Station,  
New Delhi - 110015  
Tel : 011 47 630 400

Export Office: M-53, 1st Floor,  
M-Block Market, Greater Kailash,  
New Delhi - 110048  
Tel : 011 41 329 000

## **CHANDIGARH**

SCO 703, 1st Floor, NAC, Manimajra,  
Chandigarh - 160101  
E-mail : chd@artnglassinc.com  
Tel :- +91-172-400-5600

## **HIMACHAL PRADESH**

Village : Johron, Post : Kala-amb,  
Tehsil : Nahan, Distt : Sirmour,  
Himachal Pradesh - 173030 (India)  
Tel : + 91 - 11 - 1702 - 320 006  
Fax : + 91 - 1702 - 23 8274

## **CONTACT US**

info@greenfenestration.com  
sales@artnglassinc.com,  
planning@axsyssolotuions.com

**ARTRAIL.**

**ARTRAIL.**

# ARTRAIL.

## INTRODUCING

ArtRail is a vertical of Axsys solution an associate brand of a well known company named Art n Glass.

Collectively with a manpower Of 1500+ working professionals we always strive to do better and push the boundary to further and beyond. Being a pioneers in glass it was out of habit for us to explore the possibilities of aluminium, after successful brands like Aarna, Alliance , Minimo etc.

We were keen to get into high end railing system which cater to both aesthetics and technical prowess, hence artrail was born. With a collection of six completely different railing options we are committed for bringing something new which is technically safe yet aesthetically appealing, which always gives something new for the architects and their forever evolving elevations.

With Artrail we are trying to make railing a part of the facade as now they can be powder coated or finished in any desired finish which becomes a part of the facade rather than being a totally separate entity which is kept there without any detail or story. Art rail makes railing an integral part of the facade.

It's the time to grow , it's the time to make elevations superior than others  
it's time to use something new. It's time for art rail

01

### SLIMLINE R46

Slimline R46 is the sleekest system in the market, providing a visual delight and modern aesthetic.

02

### VIEWLINE 150

When a tall baluster meets slim sharp and modern aluminium, viewline 150 is formed.

03

### MODULE 150

A Lego like module railing. you keep connecting these lovely modules and create railing anywhere.

04

### MODULE VH150

Vertical/horizontal louvres are incorporated with glass or expandable meshes to collectively or individually form this beautiful network of railing.

05

### EASYPRO 250

Easy pro 250 is a vintage SS baluster presented with multiple finishes and a chic look, with a minimalistic architecture.

06

### EASYROUND D40

The simplistic bolster and glass fitting assembly is a classics and some classics last forever

SEAMLESS

# SLIMLINE R46

NEW TECHNOLOGY WAVE

01



## INTRODUCTION

Slimline R46 is the sleekest system in the market, it provides a visual delight and modern aesthetic appeal to a project. It is also a beast when it comes to technical prowess such as amazing wind load capacity, dead load capacity and incorporation of a variety of glass thickness. Made from super tough T6063 alloy it gives an excellent load bearing capacity and the strength which allows it to provide the security that you need.

The top rail is about 25 mm and it gives a feeling of it floating in the air making the system feel more minimal and appealing.

Artrail Slimline R46 is not only the most desired railing system in villas, bungalows and farm houses but it is also loved in commercial and residential projects.

Holiday inn, Manesar  
Sant Parmanand hospital, Delhi  
Summit Tower, Noida

## CHARACTERISTICS

1. Material : Powder Coated 6063
2. Finished : RAL
3. Safety glass : Laminated, Tempered Laminated 6+6/8+8/8/10 Mm.
4. Designed for commercial and residential use.
5. Optimal for indoors and outdoors installation.
6. Level-IN glass levelling device
7. Wind Load Capacity : 2.5 kpa.

## HANDRAIL OPTIONS



Aluminium Slim Profile  
TH - Slim







DYNAMIC —

# VIEWLINE 150

FOUNDATIONS

02



## INTRODUCTION

It's one of kind all aluminium railing beats its competition of baluster railing made of different metals by miles. Viewline provides a wide range of colour options but also aluminium as a product which will not corrode.

Viewline 150 can stand 1200mm tall and can with stand a mighty wind-load of 3KPA.

Viewline is both quirky and modern in it own functional aesthetic as it offers one of the most liked 6 inches flat top rails which is excellent both for leaning on or even keeping your glasses on, while having your next soiree!!

The front lines of the system is a crisp 20mm all across which could be horizontal or vertical. It can incorporate both tempered or laminated glasses and it has beautiful mitre joints giving it a further finesse in its detailing.

## PROJECTS

Essel platina

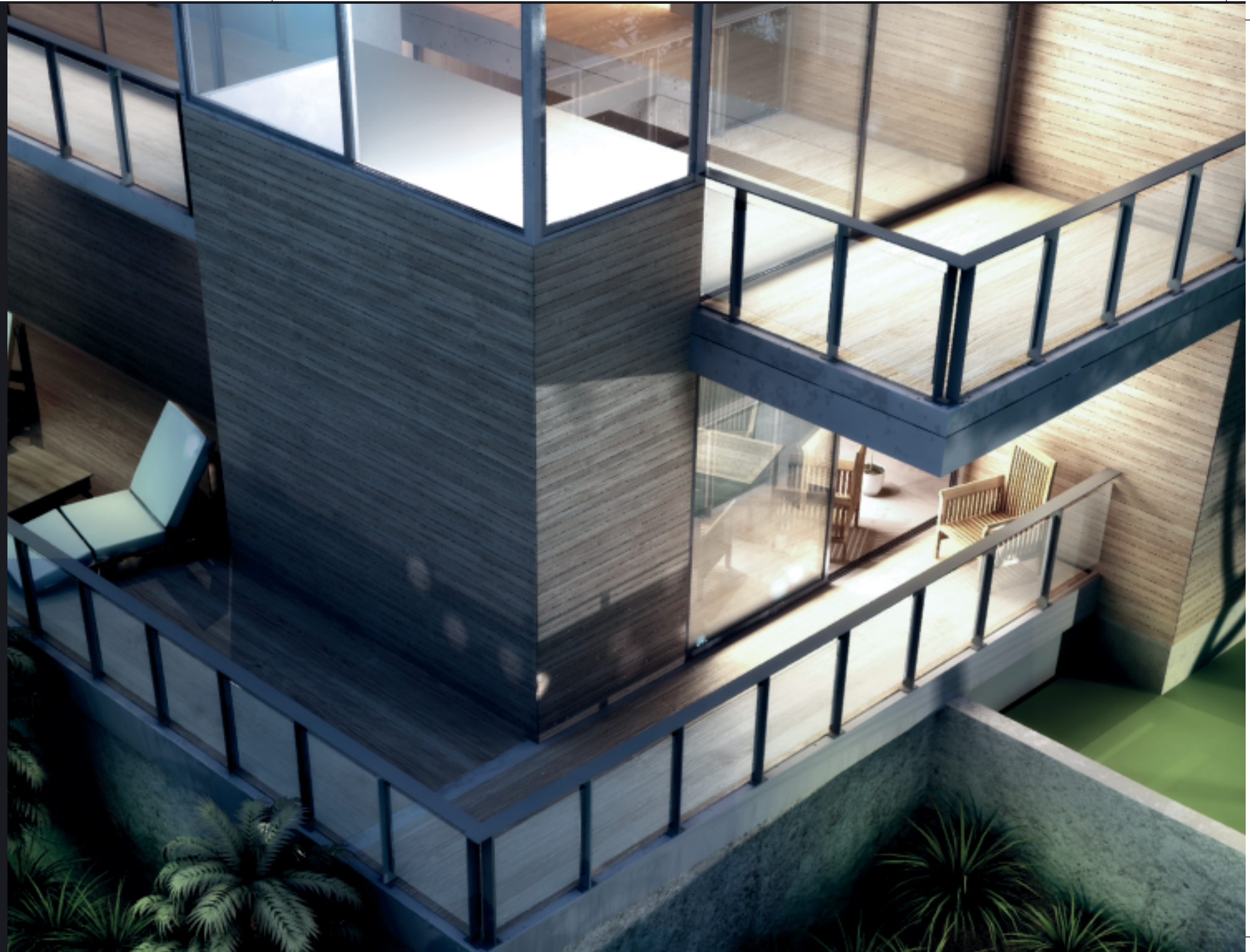
## CHARACTERISTICS

1. Material : Powder Coated 6063
2. Finished : RAL
3. Safety Glass : Laminated, Tempered Laminated 6+6/8+8/8/10 MM.
4. Designed for commercial and residential use.
5. Optimal for indoors and outdoors installation.
6. Level-in Glass Levelling Device
7. Wind Load Capacity : 3 kpa.

## HANDRAIL OPTIONS



In-build Handrail of 150mm  
Top Flat





MINIMAL —  
**MODULE 150**  
JOINERIES

03



## INTRODUCTION

Who doesn't like Lego? our love for aluminium as a material made us design a Lego like module railing system in other words you keep connecting these lovely modules and create railing anywhere.

Connected with each other without any welding, it's practically impossible to judge how these beautiful individual pieces are connected to each other. The finish and the detailing of Module 150 is pristine making the product as near as perfect and beautiful.

It has a 150mm flat top making it perfect for just leaning and enjoying the view of using it as a counter. This super modern system is something which is totally unlike any other product around the world.

These Modules can be 1100 mm high and can withstand a wind-load of 2.0KPA.

The Jewel of India - Jaipur is our first project to have used this ultra-modern beauty.

## CHARACTERISTICS

1. Material : Powder Coated 6063
2. Finished : RAL
3. Safety Glass : Laminated, Tempered Laminated 6+6/8+8/8/10 MM.
4. Designed for commercial and residential use.
5. Optimal for indoors and outdoors installation.
6. Level-in Glass Levelling Device
7. Wind Load Capacity : 2 kpa.

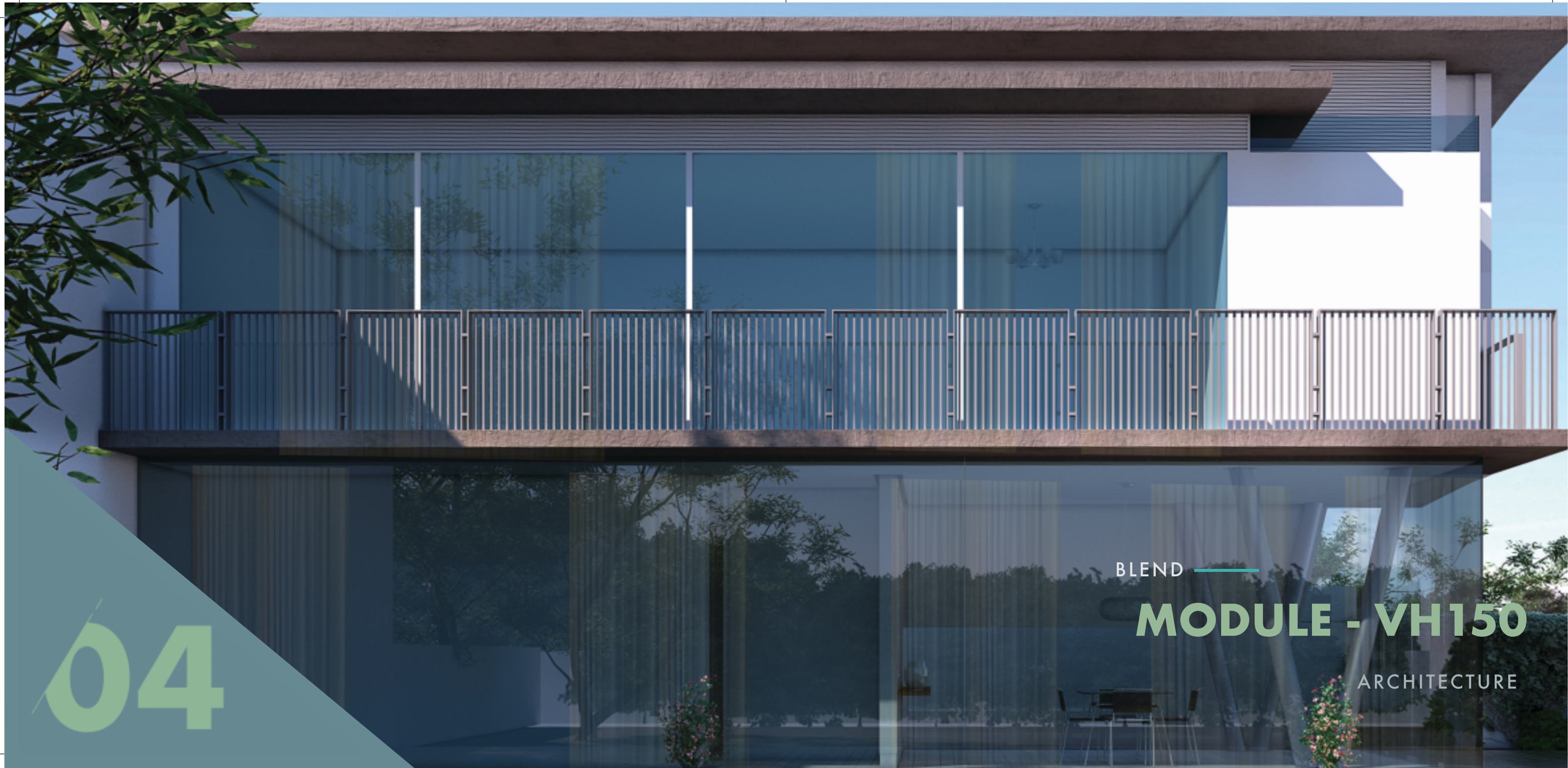
## HANDRAIL OPTIONS



In-build Handrail of 150mm  
Top Flat







04

BLEND

MODULE - VH150

ARCHITECTURE



## INTRODUCTION

What if we make three types of different modules and try and mix & match further, pushing the boundaries of this plug-n-play railing even further.

Glass, vertical/horizontal louvres and expandable meshes.  
All three of them can be incorporated together or individually forming this beautiful railing which gives the exterior an extraordinary uplift. It becomes an extension of louvres used in exterior with a similar language of either horizontal or vertical lines.

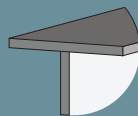
Box type, Z type and Y type are three different type of louvres to be chosen from of this absolutely gorgeous Industrial product.

Art rail is the only company to develop railing a like this. Using Module 150VH will make your site exclusive and give the elevation a totally new lovable dimension.

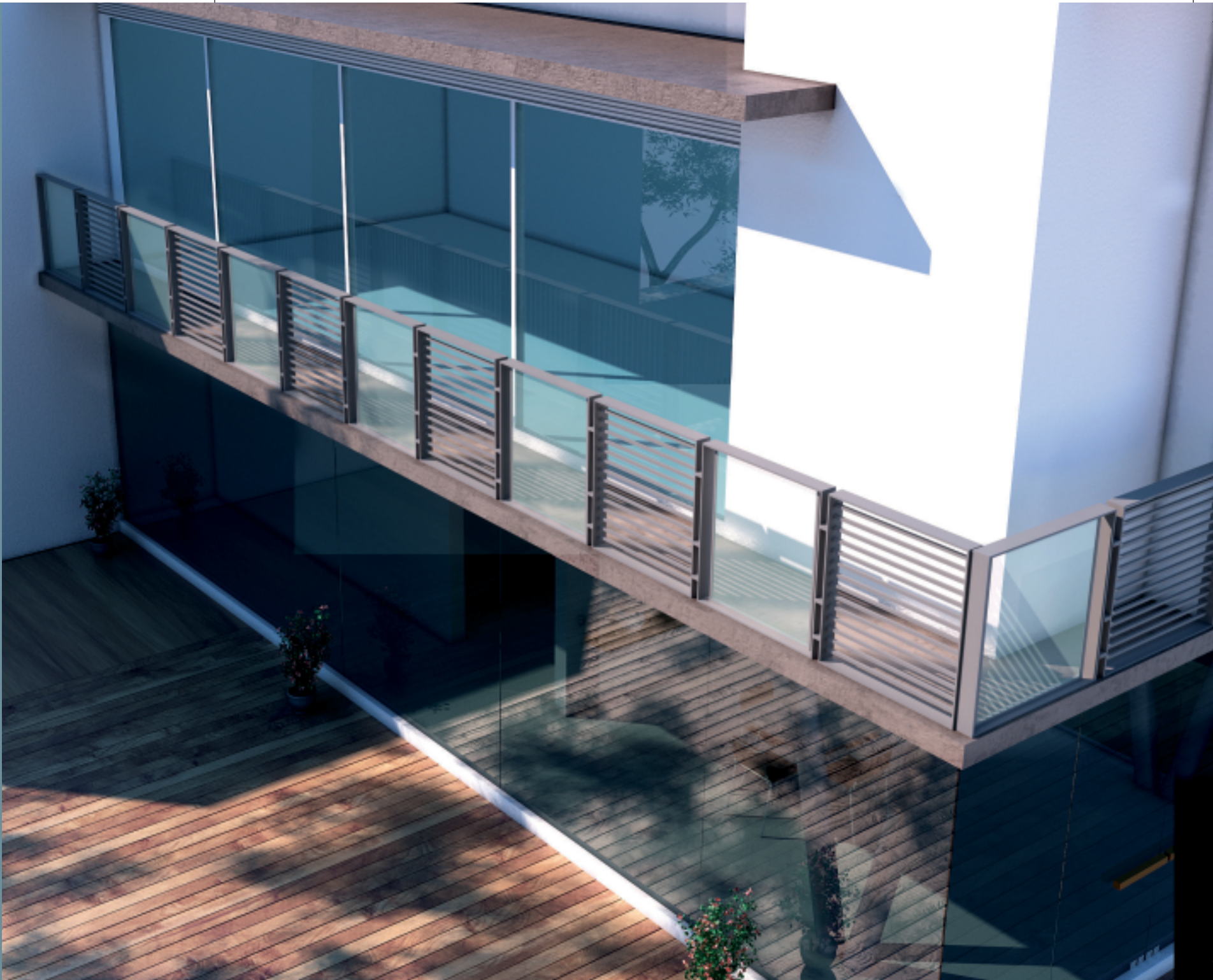
## CHARACTERISTICS

1. Material : Powder Coated 6063
2. Finished : RAL
3. Safety Glass : Laminated, Tempered Laminated 6+6/8+8/8/10 MM.
4. Designed for commercial and residential use.
5. Optimal for indoors and outdoors installation.
6. Level-in Glass Levelling Device
7. Wind Load Capacity : 2 kpa.

## HANDRAIL OPTIONS



In-build Handrail of 150mm  
Top Flat





05

DIVIDED —

**EASY PRO 250**

STRUCTURE



## INTRODUCTION

In this new age of minimalism Easy Pro 250 is a vintage SS baluster solution presented in a better looking solution with multiple finishes and chic looks. Easy pro 250 has individual connectors repeated one after the other to form the base of the railing. The connectors come in 6 inches or 9 inches depending upon the technical requirement.

The top rail has 4 different options which to chose. But the most iconic is the 19mm special rail which can be installed around the periphery of the glass forming and completely new look. The easy Pro is perfect for both exterior and interior and is among those product which is just forever.

## CHARACTERISTICS

- 1. Material : Powder Coated Ss 304/316
- 2. Finished : Ral/Gloss/Matt
- 3. Safety Glass : Laminated, Tempered Laminated 6+6/8+8/8/10 Mm.
- 4. Designed For Commercial And Residential Use.
- 5. Optimal For Indoors And Outdoors Installation.
- 6. Level-in Glass Levelling Device
- 7. Wind Load Capacity : 2.5 Kpa.

## HANDRAIL OPTIONS



Stainless Steel Round  
SH- Round Handrail



Stainless Steel Round Tube  
TH- Round Handrail  
Aluminium Slim Profile  
TH- Slim



Aluminium Slim Profile  
TH- Slim



Stainless Steel Square  
TH- Square





BOLSTERED —

## EASY ROUND D40



06



## INTRODUCTION

The most famous and perhaps the most frequently used railing in the world. Some designs are just forever and the Easyround D40 has been a product of Art-n-Glass is one of them, improving and perfecting each year as we progress.

Easypro comes across to be the most price effective yet beautiful solution for any-type of railing. Whether the railing is ascending , descending , outdoor or indoor it's good for every area every and solution. It can come in multiple finishes now. Easyround comes in different sizes as per technical needs. But the most famous is the 50mm diameter.

## CHARACTERISTICS

- 1. Material : Powder Coated Ss 304/316
- 2. Finished : Ral/Gloss/Matt
- 3. Safety Glass : Laminated, Tempered Laminated 6+6/8+8/8/10 Mm.
- 4. Designed For Commercial And Residential Use.
- 5. Optimal For Indoors And Outdoors Installation.
- 6. Level-in Glass Levelling Device
- 7. Wind Load Capacity : 1.5 Kpa.

## HANDRAIL OPTIONS



Stainless Steel Round  
SH- Round Handrail



Stainless Steel Round Tube  
TH- Round Handrail



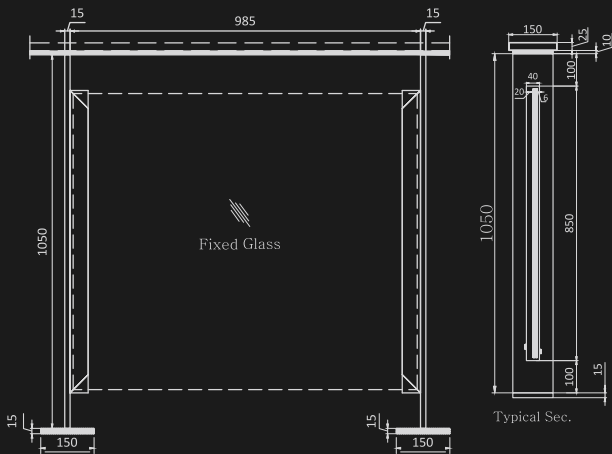
Aluminium Slim Profile  
TH- Slim



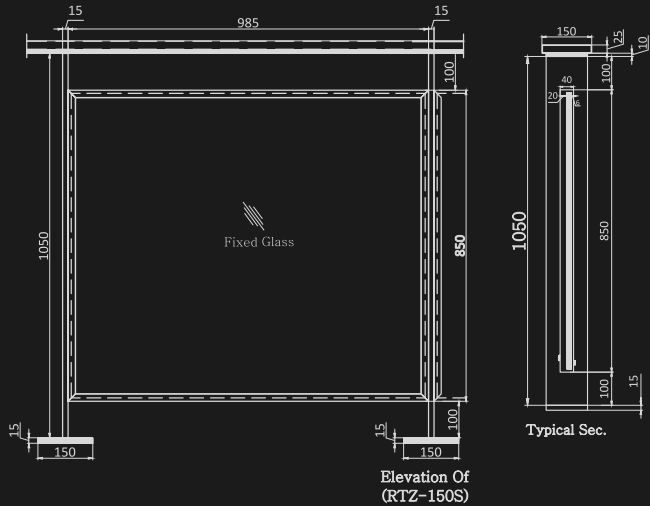
Stainless Steel Square  
TH- Square



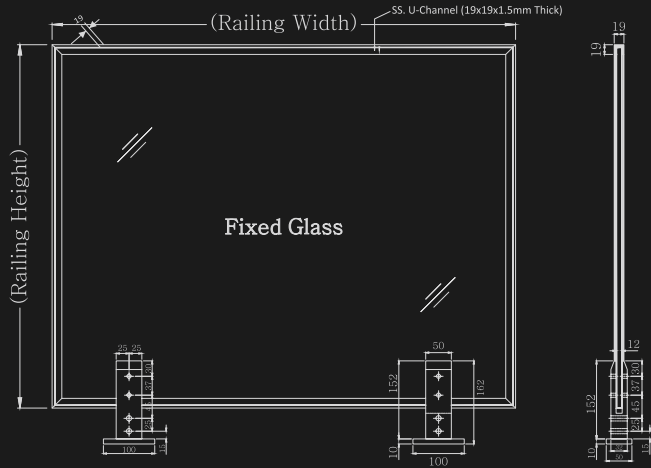




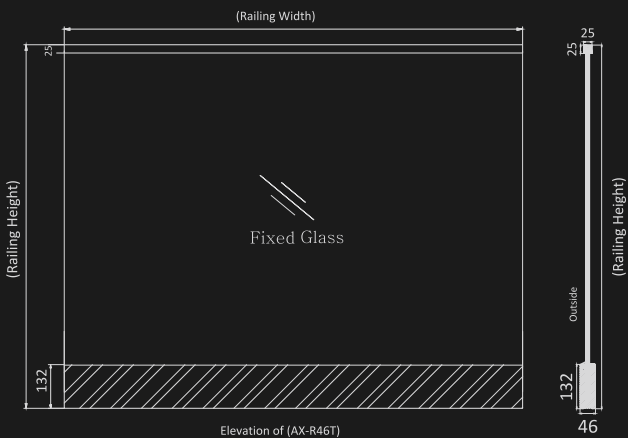
**VIEWLINE 150**  
1ST DETAIL



**VIEWLINE 150**  
2ND DETAIL



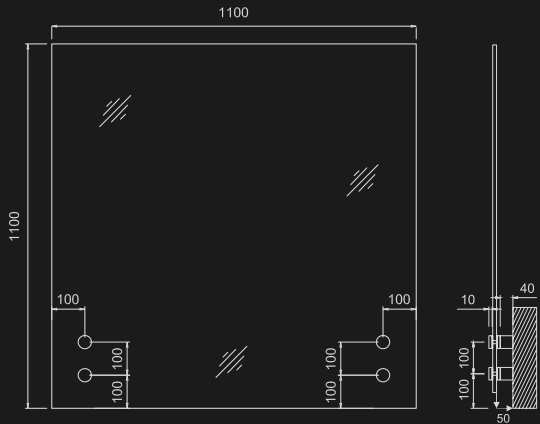
**EASYPRO 250**  
1ST DETAIL



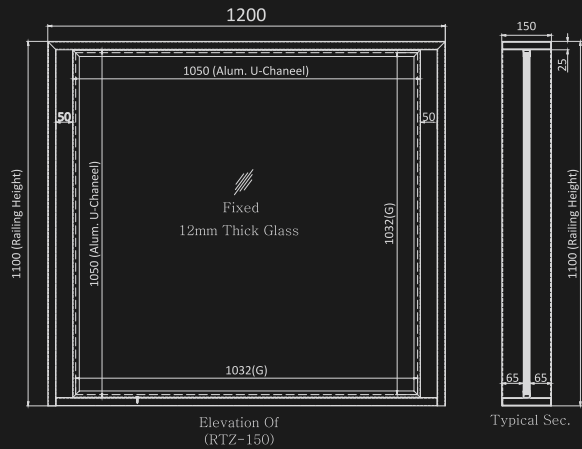
**SLIMLINE R46**  
1ST DETAIL



EASY ROUND PRO 40  
1ST DETAIL



MODULE 150  
1ST DETAIL



MODULE VH150  
1ST DETAIL

