



ALUMINUM SYSTEMS ALLIANCE

Works :-
Village : Rampur Jattan, Post: Kala Amb, Tehsil: Nahan,
Distt: Sirmour Himachal Pradesh -173030.

Display at :-
1/118 W.H.S., 2nd floor, Kirti Nagar, Near Fire Station New Delhi-110015
e-mail : info@axsysolutions.com

Contact us :-
Tel. : 011-47630400

Toll Free : 1800 102 1464

www.axsysolutions.com

ALUMINUM SYSTEMS ALLIANCE

environmental | sustainable | design

Axsys Solutions has been established in the year 2014 to cater to the Developers / Architects / Consultants,

who have a World Class Approach towards the aluminum façade and fenestration design. Axsys solution was formed to quench the markets thirst for a superior quality aluminum fabrication. Henceforth we associated ourselves with worlds leader in aluminum machine Elumatec and got the latest and most elite machines. Making us one of the best technologically forward façade and fenestration set up in the country. With a highly motivated and experienced members and a common goal of perfection we have set out to raise the bar in aluminum fabrication to a whole new level.

The promoters have been dealing in glass and uPVC business since long .Now due to this Aluminium segment, it became the perfect business associates to builder, architects, consultants, contractors, PMC and anyone else who is looking for a top of the line one stop solution in fenestration and facades. Therefore, we are proud to be India's largest integrated facility in glass processing, fenestration and facades design.

Group Legacy

Art-N-Glass founded since - 1986 has become a renowned name in almost all verticals related to glass with highly skilled more then 1200 staff members - everything from decorative mirrors to insulated glass, and from glass sinks to glass furniture. Their infrastructure, in the hands of the highly skilled technicians, has made it possible for us to provide glass products of unmatched quality. Out design department, with their constant innovation and R&D, ensures that and kind of glass processing that can be visualized by you, can be realized by us. They have the highest quality control certification (ISO9001:2008), ISI-2553 and systems in place to ensure that all processes, including cutting, edge polishing, toughening, laminating, insulating, water jet cutting, shape cutting, beveling bending etc.

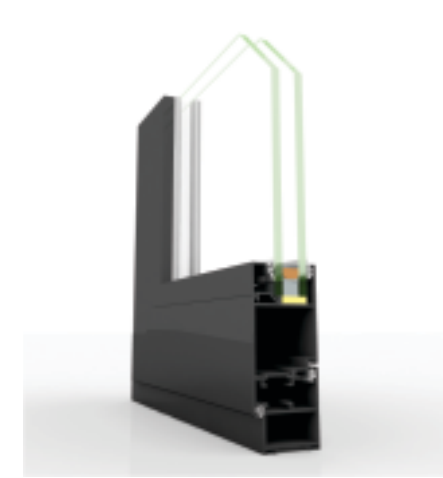
Green Fenestration is one of the most advance and high-tech manufacturer of world class uPVC Doors and windows in India. We have state-of-the-art fenestration set up with German and Italian machinery. Our technical staff has a global experience and exposure. We are regularly updated and trained by our German suppliers in new products, technology and manufacturing process.

TABLE OF CONTENTS

Introduction	02
Windows and Doors	
AX - 40	04
AX - 50	06
AX - 70	08
AX - 77	10
Sliding Systems	
AX - 90	12
AX - M75	14
AX - M18	16
AX - 120	18
AX - 150	20
Fold & Slide System	
FD - 83	22



AX-40



Ax-40 is a high performance aluminium system that combines aesthetic design with energy efficiency. Axsys system offers a solution for every standard application for inward and outward opening windows and doors. Furthermore, Axsys system allows the fabrication, production and easy assembly of windows and doors in less time. This system can be combined with the Vayu system for an optimal indoor air-quality.

- Inward-outward opening window system
- Basic profile depth of 40mm
- Sleek Profile System

Maximum

Vent size Casement

- (WXH) 900mm x 1600mm

Vent size top hung

- (WXH) 900mm x 1600mm

Vent Size Tilt&Turn

- (WxH) 800mm x 1600mm

Vent Size Tilt&Turn

- Vent Size Door

(WxH) 1000mm x 3000mm

- Glazing thickness are available from 4mm to 24mm

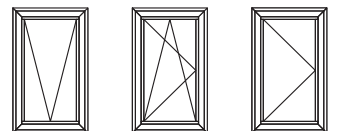
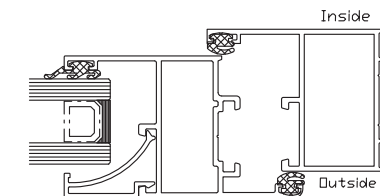
- Profile powder coating

- Fittings : Black

- Maximum vent weight of 75kg. (Window)

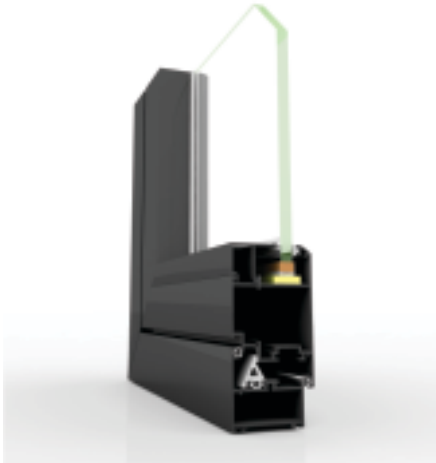
- Maximum vent weight of 120kg. (Door)

- Multi-point locking





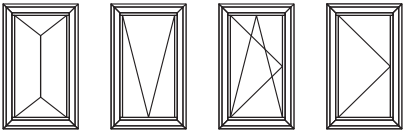
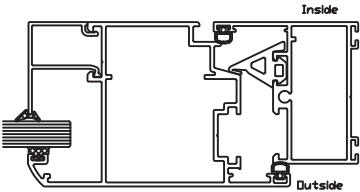
AX- 50



AX-50 is a window system that combines ultimate elegance with elevated strength and ease in operational. ideal system for new-build constructions as well as for the replacement of steel-framed/wooden windows. All types of side or top hung inward/outward opening windows are available with hinges or friction stays.

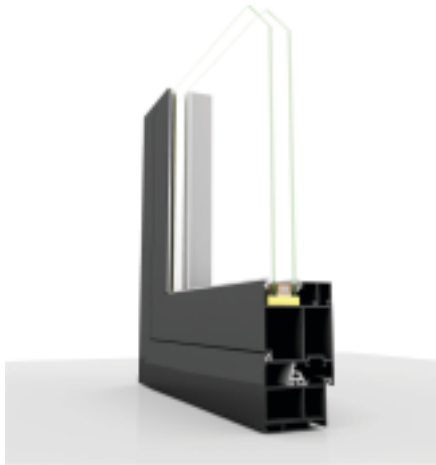
- Inward/outward opening window system
 - Basic profile depth of 50mm
 - EPDM Gaskets are Designed For Proper Sealing & Gripping.
 - Multi opening types: side-hung, top-hung and double-vent window opening, Tilt &Turn & Parallel Pop-out Windows.
 - Surface mounted fittings
- Maximum

 - Vent size side-hung (WXH) 1200mm x 2200mm
 - Vent size top hung (WXH) 800mm x 1800mm
 - Vent Size Tilt&Turn (WxH) 800mm x 1600mm
 - Vent Size Parallel Pop-out (WxH) 1500mm x 2400mm
 - Vent Size Door (WxH) 1000mm x 3600mm /1200mmx3000mm
- Glazing thickness are available from 5mm to 34mm
 - Fittings : Black
 - Maximum vent weight of 90kg. (Window)
 - Maximum vent weight of 150kg. (Door)
 - Maximum opening angle up to 90°
 - Multi-point locking



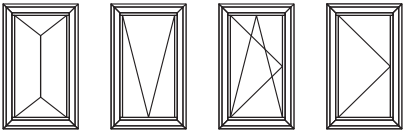
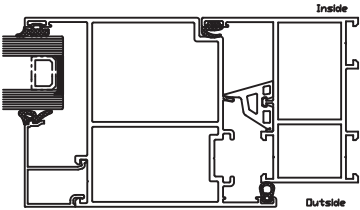


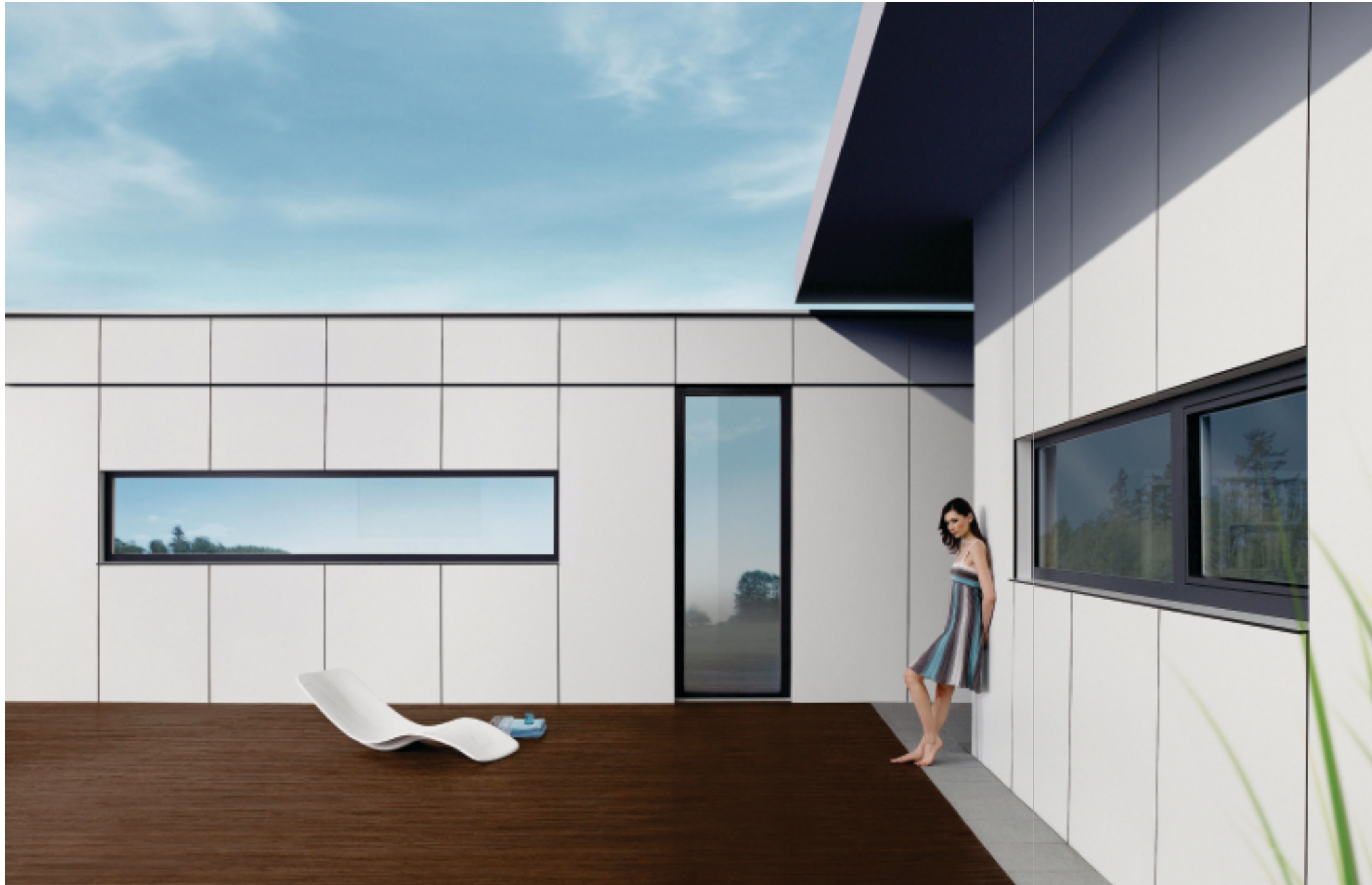
AX-70



AX-70 is a system for windows and doors that combines ultimate elegance, elevated strength, energy-efficiency and ease in optional. The systems slender exterior contours offer the ideal solution for new-build constructions as well as for the replacement of steel framed/wooden windows and window-doors, respecting the original design. All types of inward and outward opening vents are available.

- Inward-outward opening window system
 - Basic profile depth of 68mm
 - Opening types: Choice of side-hung, Top-hung and double-leaf window opening, Parallel Pop-Out, Tilt & Turn
- Maximum
- Vent size Casement (WXH) 1500mm x 2000mm
 - Vent size top hung (WXH) 800mm x 1800mm
 - Vent Size Parallel Pop-Out (WxH) 1500mm x 2400mm
 - Vent Size Tilt & Turn (WxH) 800mm x 2400mm
 - Vent Size Door (WxH) 1200mm x 3600mm
- Glazing thickness are available from 38mm to 52mm
 - Profile powder coating
 - Maximum vent weight of 120kg. (Window)
 - Maximum vent weight of 200kg. (Door)
 - Multi-point locking
 - Fittings : Black





AX-77



AX-77 offers an extensive range of non-insulated profiles for the construction of elegant and moderately aluminium frames. Therefore AX-77 is the ideal system for outdoor applications in warm climates but it can also be used for the partitioning of indoor office spaces. The system is ideal for thicker glasses with lesser visual frame, it is compatible for inside glass blind (automatic/Manual) as well.

- System for Blinds.
- Fixed Window System
- Face Width of 32mm
- Profile Powder Coating

Minimum

- Panel Size (WxH) – 800mmx800mm
- Panel Size (WxH) – 3000mmx 4000mm
- Basic size of single glazing thicknesses 39mm to 53mm.



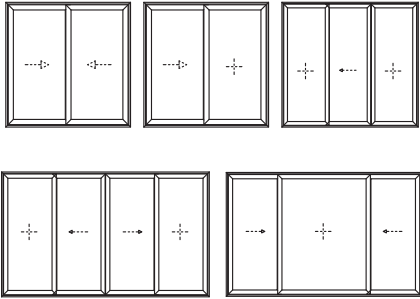
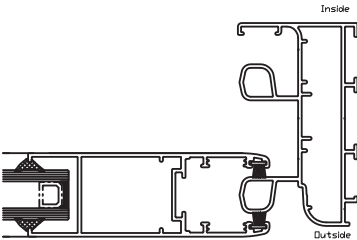


AX-90



AX-90 sliding system that has been designed to respond to new demands for aesthetics and security. The outer rail has two main advantages: invisible drainage from the outside and discrete water channeling on the inside. Frame and vent are designed in softline look.

- Sliding System
 - Basic profile depth of outer profile 90mm
 - Multi opening types:
 - Solution for Multi-point locking
 - Surface mounted fittings
- Maximum vent size (WxH) 1600mm x 3000mm
- Glazing thickness are available from 6mm to 24mm
 - Maximum vent weight of 100kg.
 - Profile powder coating
 - Fittings : Black





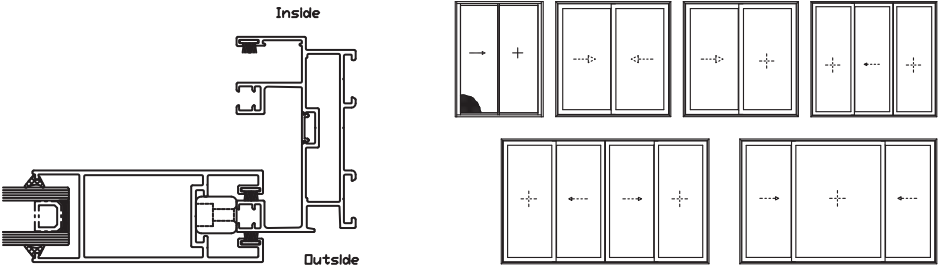
AX-M75



Axsys sliding and elements are the perfect answer to the increasing demand for safety and durability and design. They are combined with strong technical performances to make up a highly innovative system. offers an enhanced burglary resistance.

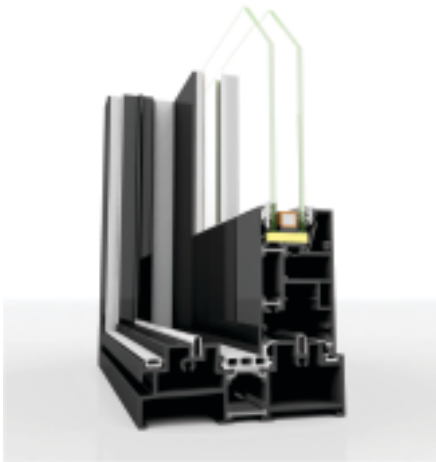
- Slider For High end Home (Exterior & Interior)
 - Basic profile depth of vent profile 75mm
 - Narrow face width with proportionally less frame to more glass
 - Slim look 35mm on Interlock
- Maximum

 - vent size (WXH) 2000mm x 3200mm
 - Wind load resistance : 3kpa.
- Glazing glass thickness are available from 8mm to 26mm
 - Profile powder coating
 - Fittings : Black/White
 - Multi-point locking
 - Maximum vent weight of 200kg.





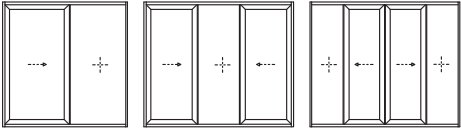
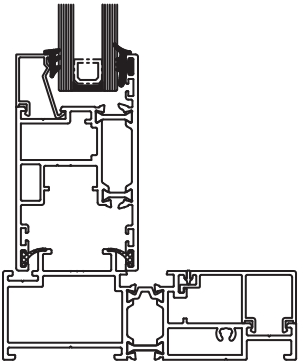
AX- 120



AX-120 is a thermally insulated sliding system with a vent weight up to 200 kg. and height up to 3.6 metres. The sophisticated concept fulfills the users high expectations of optimum quality, high insulation and ease of operation. The system is available with a low threshold that creates a perfect continuity between the indoor and outdoor spaces and improves the accessibility to the building. AX-120 system can be combined with the vayu system as well.

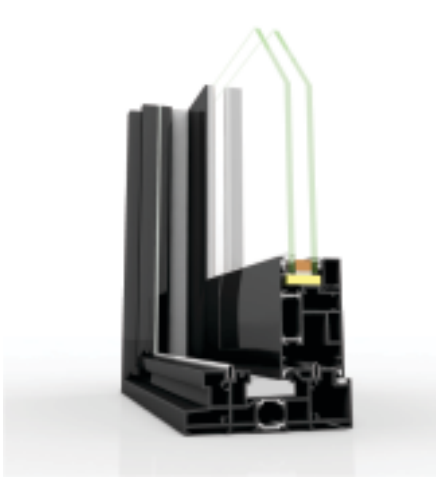
- Insulated Lift & Slide System
 - Basic profile depth of outer profile 120mm
 - Solution for multi point locking
 - Surface mounted fittings
- Maximum

 - vent size (WXH) 2000mm x 3600mm
 - Maximum vent weight of 200kg.
- Glazing thickness are available from 24mm to 32mm
 - Multi-point locking
 - Profile powder coating
 - Fittings : Black





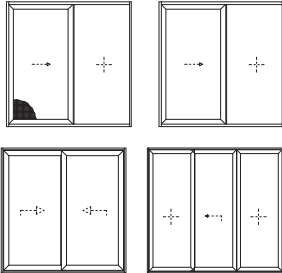
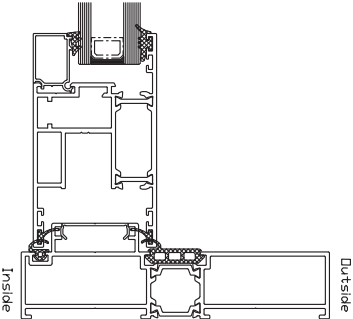
AX- 150



The AX-150 lift & slide elements gives a wide variety of possibilities along with high performance and enhanced burglar resistance. The system is not only functional, but also offers an economical and aesthetic solution. An additional asset of the system is the use of inside glass blinds in the system. The AX-150 is based on improved (slide and lift slide monorail, 2-rail and 3-rail) are combined in one single design. The optimized threshold solution, the enriched insulation value and the possibility to use thicker glass with a weight up to 400 kg, underline the contemporary characteristics of AX-150 can have provision of natural air ventilation system vayu.

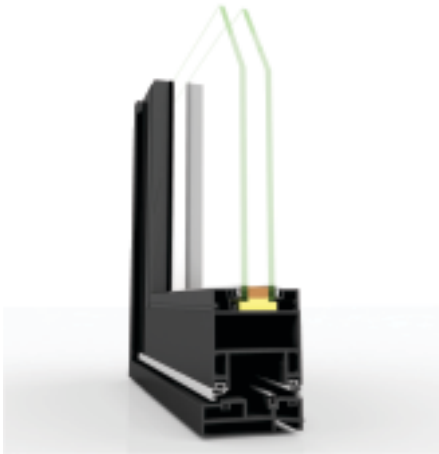
- Insulated Lift & Slide System
 - Basic profile depth of outer profile 150mm
 - Multi opening types:
 - Surface mounted fittings
- Maximum

 - vent size (WXH) 3000mm x 3600mm
 - Maximum vent weight of 400kg.
- Glazing thickness are available from 28mm to 48mm
 - Profile powder coating
 - Multi-point locking
 - Fittings : Black





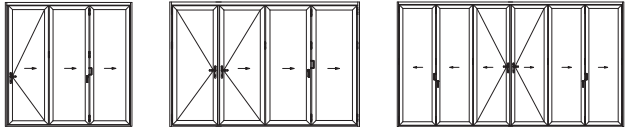
FD - 83



People are continuously looking for ways to maximize their space, as well visually as physically. The Concept Axsys offers them the opportunity to optimize the utilization of their rooms, drawing the external environment into their homes. Next to the improved space utilization, this innovative system offers the advantage of loads of daylight coming in, as well as an aesthetical design. Next to the functional design FD-83 is the solution for maximum performance in terms of air, wind and water resistance, with decreased threshold, the Low Threshold option offering a rise of only 8 mm and finally the Flat Bottom solution allowing easy passing and maximum convenience for high traffic. Another practical feature of FD-83 is the optional door locking principle which allows to use the first leaf as an entrance door without affecting the folding capacity of the system.

- Face widths From-170mm
 - EPDM Glazing Gaskets
 - Movement left to Right ,and Right To Left opening is possible
 - Bottom Low floor threshold design
- Maximum

 - vent size (WxH) 1200mm x 3600mm
 - Maximum vent weight of 150kg.
- Glazing thickness are available from 28mm to 32mm
 - Profile powder coating
 - Multipoint locking
 - Fittings : Silver



QUALITY COMMITMENT

Axsys Solutions have the highest quality control certification ISO 9001 : 2008 and World class certification of powder coating from Qualicoat certification & Interpon akzonobel for powder coating.

Our state of the art plant setup with imported machinery from Germany, Italy & USA. To insure world class quality with highly trained & Experience staff.

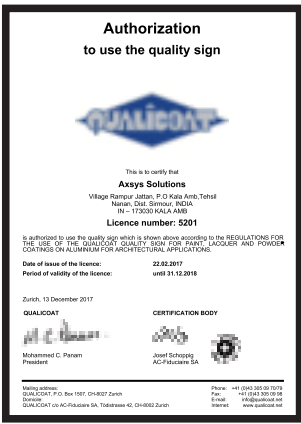
Surface treatment

Axsys profiles are extruded using aluminium with EN 3700 (6063) alloy. This alloy offers very high durability and resistance to deterioration due to external weather conditions.

The powder coating carried out in accordance with Qualicoat specifications and consists in applying a coloured layer of powder to the profiles and enameling at between 180 and 200 °C/min so as to obtain a set layer.



The increasing interest in these types of certificates proves the importance of sustainable buildings and products. axsys innovative products, continuing research and focus on knowledge exchange will allow the company to make a genuine contribution to this new way of building.



Role towards Environment

Axsys Aluminium is aware that companies play an important role in the care for the environment. That is the reason why axsys is constantly searching for new ways to become. This means that axsys is passionately interested in sustainability, by being at the forefront in the development of energy saving and sustainable products. This has resulted in some actions, taken by axsys to try and make a difference.

The energy-efficiency of our systems is a very important topic for axsys A good example of this is the development of our new window and door system which can be used for passive houses. Also our high insulated sliding elements and curtain walls can minimize the buildings energy loss.

The integration of inside glass blinds into our facade systems makes it possible to control the sun entering the building minimizing the use of energy intensive air-conditioning.

PERFORMANCES



Acoustic performance



Air tightness



Anti-burglar



Thermal insulation



Water tightness



Wind load resistance

